

Issac Burner bought two lots for \$10 and built this home. It had a sleeping loft which was common for early log homes.



The first Berry-Lincoln store was opened in 1832. Stores were popular gathering places to swap stories.



This is what the inside of the Berry-Lincoln store may have looked like.



In the left foreground is the home and office of Dr. Francis Regnier who came to New Salem in 1832.



James Rutledge, co-founder of New Salem, built this inn/tavern. The cost was 37½ cents for an overnight stay.



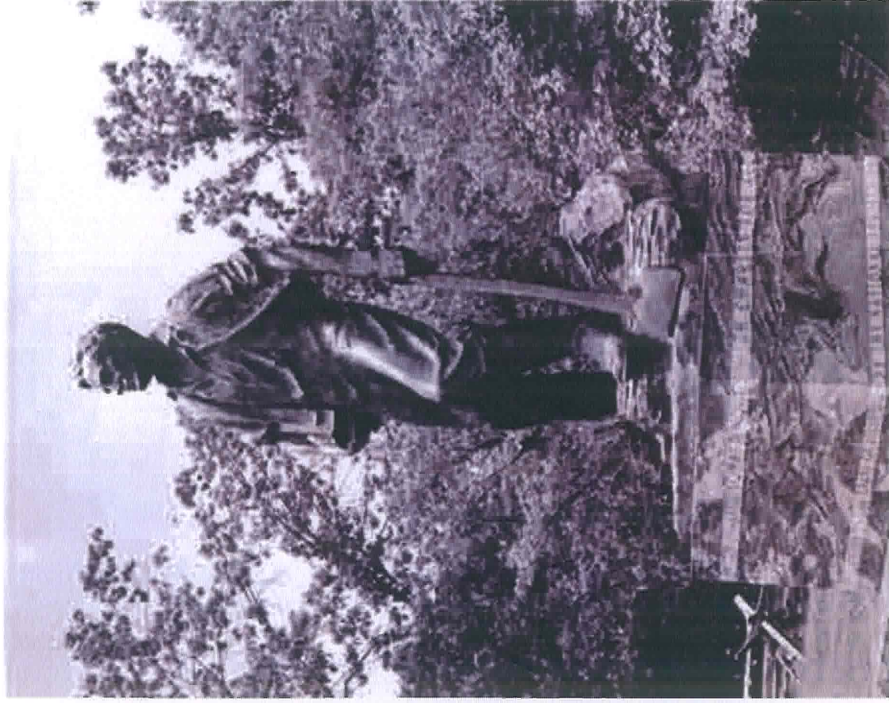
The Carding Mill and Wool House was run by two oxen treading an inclined wheel.



The Camron/Rutledge Mill was built on the Sangamon River. A dam was built to power a sawmill and gristmill.



# New Salem- An Ending



- Lincoln left New Salem for the last time in 1837. He moved to Springfield.
- As others moved from New Salem, they took their homes with them.
- It was not long before New Salem no longer existed.



# New Salem- A New Beginning

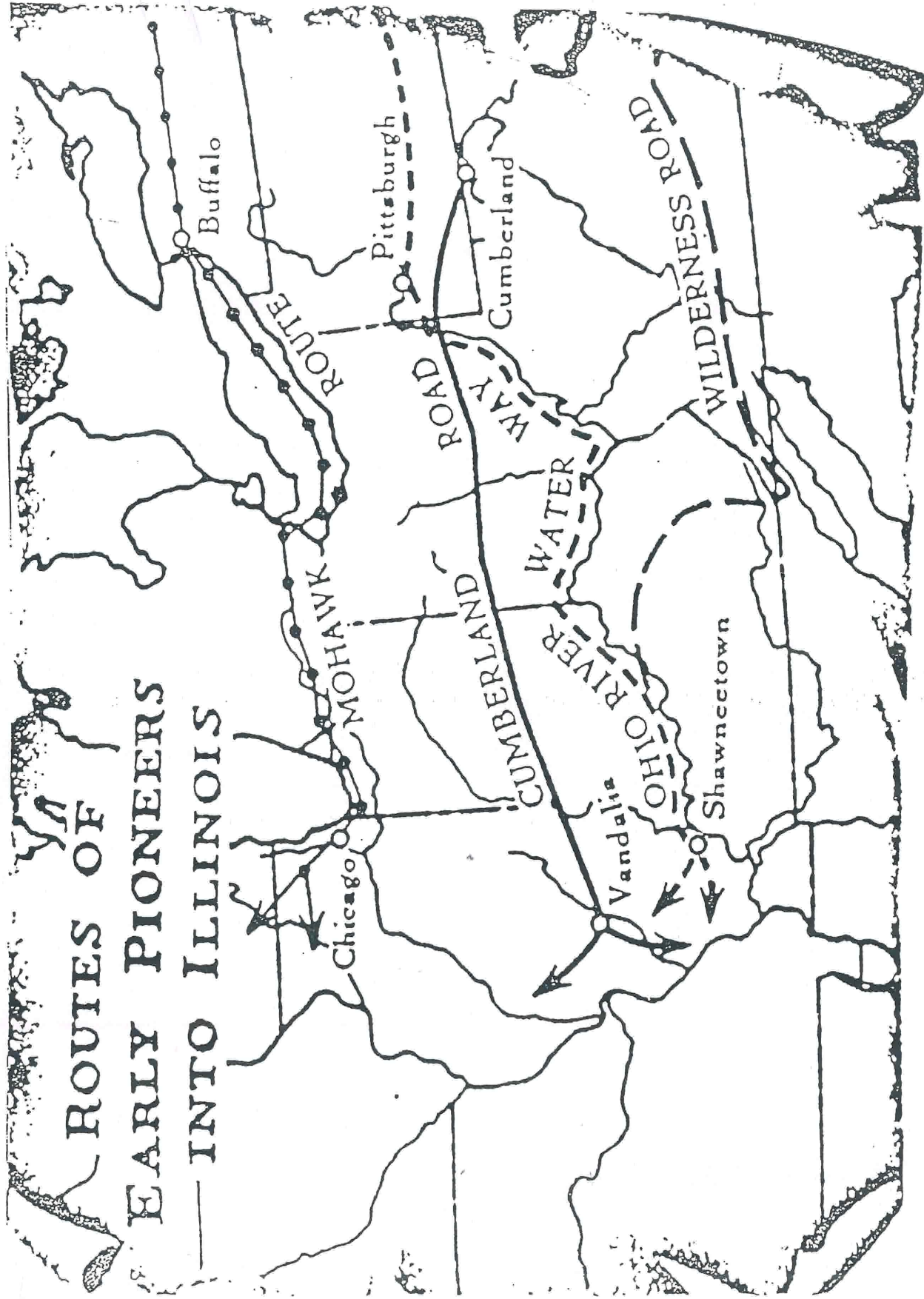
In 1932 the Civilian Conservation Corps began the reconstruction of New Salem. The Onstot Cooper Shop is the only original building.



# Illinois Prairie

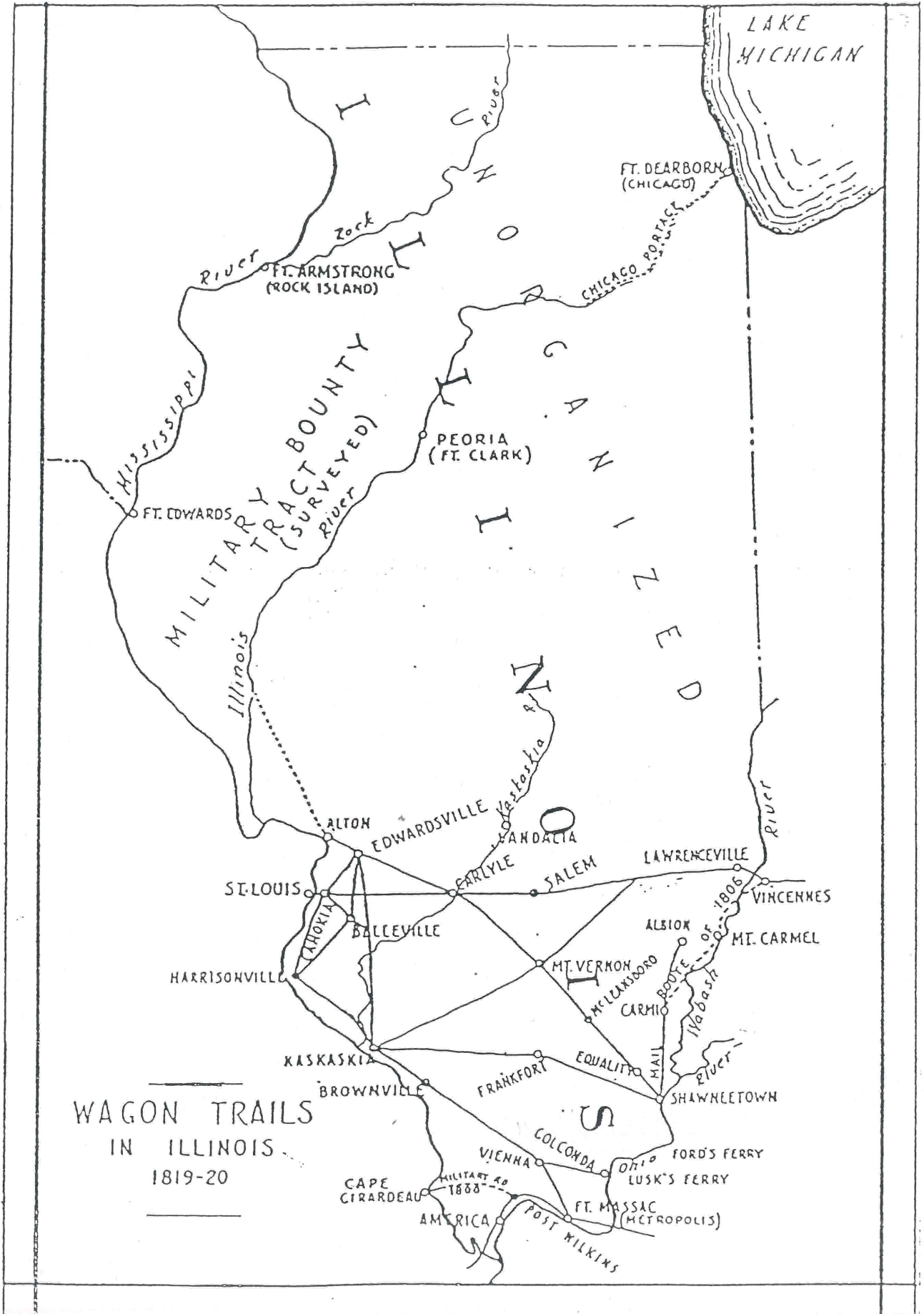


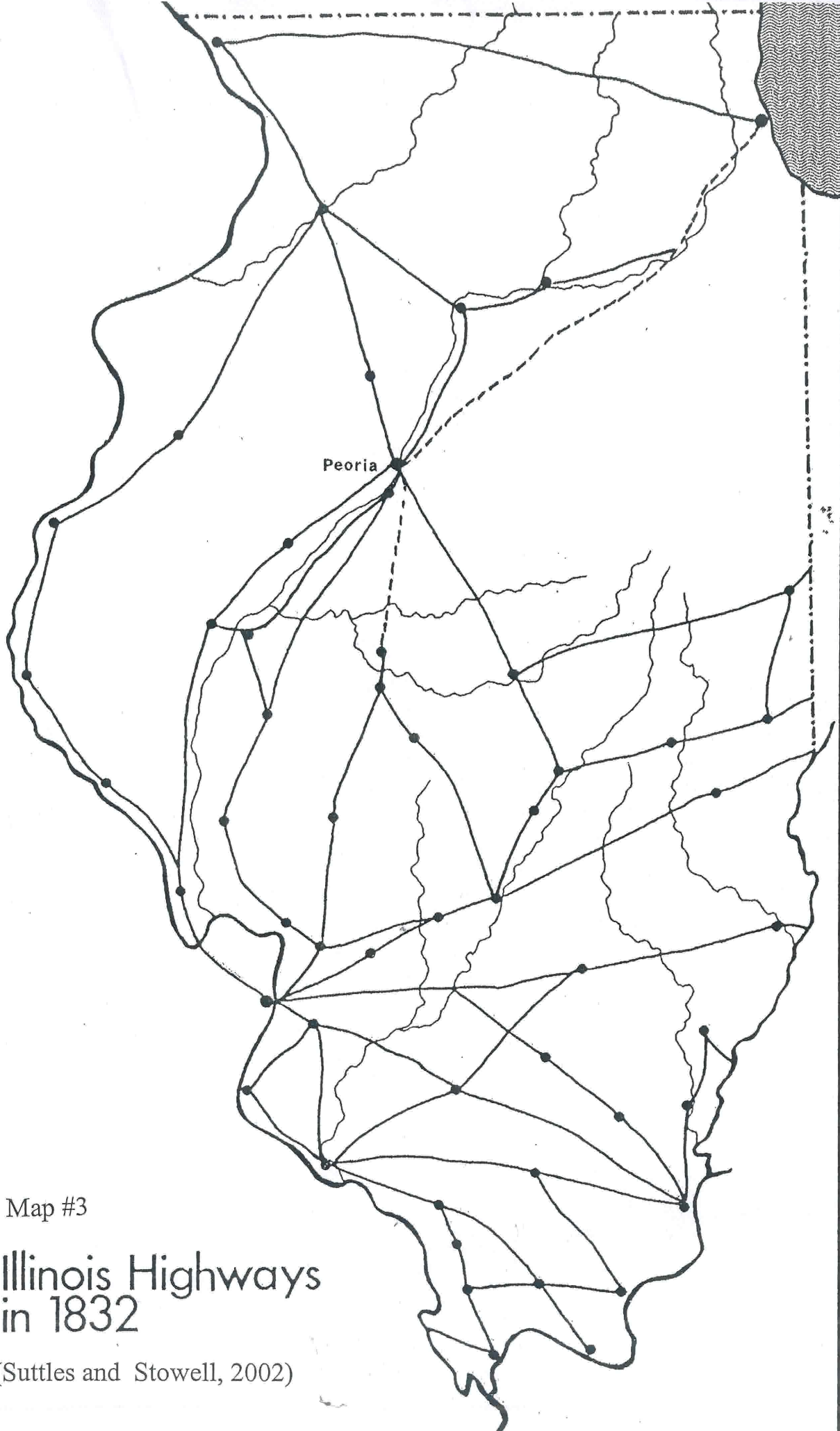
Map / - Routes of Early Pioneers Into Illinois  
(Pygman and Prater 1955, 15)



# Map 2 - Wagon Trails In Illinois

(Corliss 1934, 9)





Map #3

# Illinois Highways in 1832

(Suttles and Stowell, 2002)